



INTAKE SYSTEMS FOR VEHICLES LISTED ARE 50 STATE LEGAL. SEE KNFILTERS.COM FOR CARB STATUS ON EACH PART FOR A SPECIFIC VEHICLE.

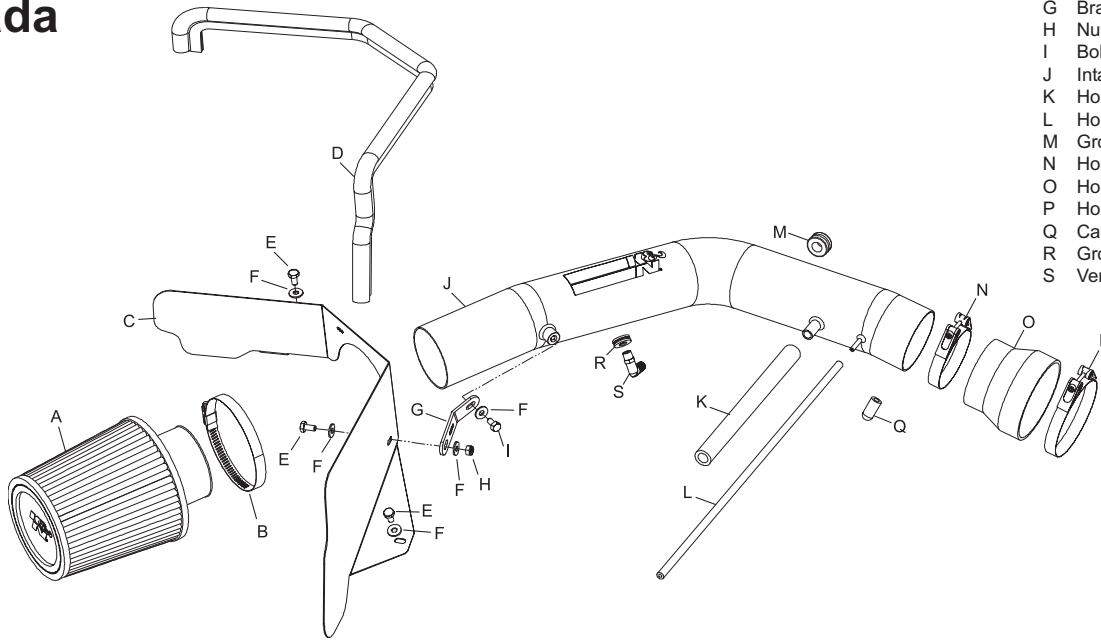
# INSTALLATION INSTRUCTIONS

## 77-3036KP CHEVROLET / GMC / OLDSMOBILE 2002-05 Trailblazer / Envoy 2002-04 Bravada L6-4.2L

NOTE: This kit was not designed to fit vehicles with a body lift.

### TOOLS NEEDED:

- Flat Blade Screwdriver
- Phillips Screwdriver
- Pliers
- 10mm wrench
- Ratchet
- Extension
- 10mm Socket
- Drill
- 1-1/4 Hole Saw



### PARTS LIST:

Description	Qty.	P/N
A Air Filter	1	RU-4730
B Hose Clamp, #48	1	08601
C Heat Shield	1	07319
D Edge Trim, 32"L	1	102493
E Bolt, 6mm Hex, 16mm L	3	07812
F Washer, 6mm Flat	5	08269
G Bracket, Angle	1	010055
H Nut, 6mm Nylock, SS	1	07512
I Bolt, 6mm Hex, 12mm L	1	07727
J Intake Tube	1	27352
K Hose, 1/2" ID x 9" L	1	08401
L Hose, 4mm ID x 18" L	1	08153
M Grommet, 1/2" ID	1	08064
N Hose Clamp, #44	1	08560
O Hose, Silicone Step	1	08429
P Hose Clamp, #52	1	08610
Q Caplug; 11/64"ID, 1/2"L, grey	1	08116
R Grommet; 1-3/4"OD, 1"ID, 1/2"thk	1	082000
S Vent; 90deg, 1" X 1", barb, plastic	1	08986

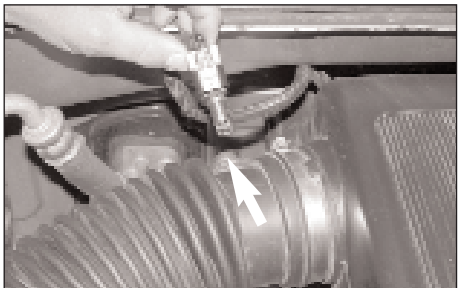
**NOTE: FAILURE TO FOLLOW INSTALLATION INSTRUCTIONS AND NOT USING THE PROVIDED HARDWARE MAY DAMAGE THE INTAKE TUBE, THROTTLE BODY AND ENGINE.**

### TO START:

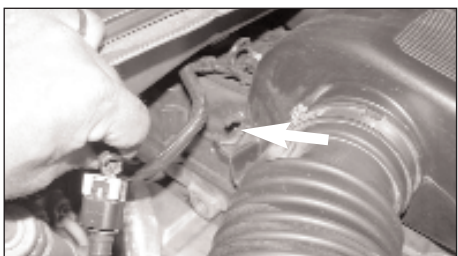
1. Turn the ignition OFF and disconnect the vehicle's negative battery cable.  
**NOTE: Disconnecting the negative battery cable erases pre-programmed electronic memories. Write down all memory settings before disconnecting the negative battery cable. Some radios will require an anti-theft code to be entered after the battery is reconnected. The anti-theft code is typically supplied with your owner's manual. In the event your vehicles' anti-theft code cannot be recovered, contact an authorized dealership to obtain your vehicles anti-theft code.**



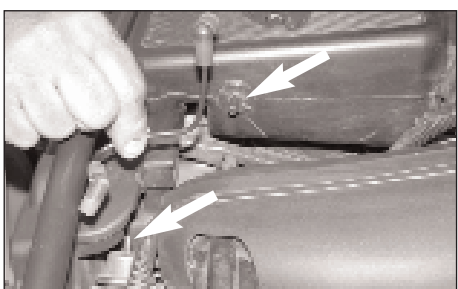
2. Remove the air cleaner cover, which is secured by three bolts.



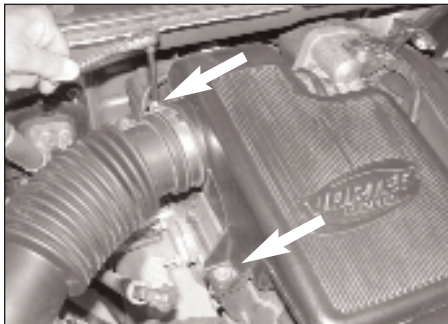
3. Remove the air temperature sensor from the stock intake tube as shown.



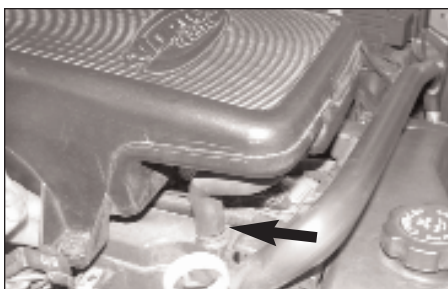
4. Unclip the air temperature sensor harness from the resonator as shown.



5. Remove the vacuum hose from the fuel pressure regulator and from the resonator as shown.



6. Loosen the two bolts on the resonator as shown.



7. Loosen the hose clamp at the throttle body, then, lift the resonator upwards and disconnect the crank case vent hose as shown.



7a. On vehicles with air injection squeeze release ring then remove air injection line from intake tube.

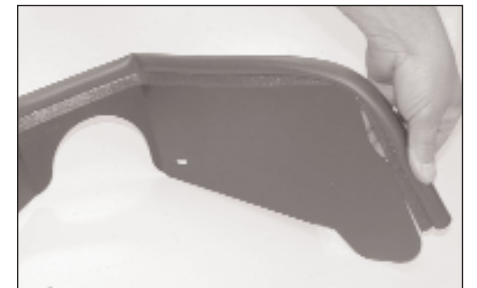


8. Remove the complete air intake assembly as shown.

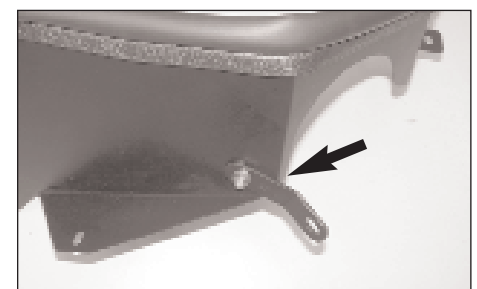
**NOTE: K&N recommends that you do not discard your factory air intake.**



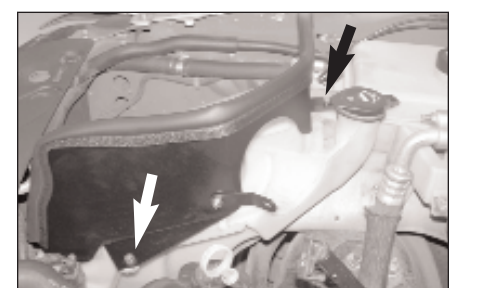
9. Remove the air inlet duct as shown.



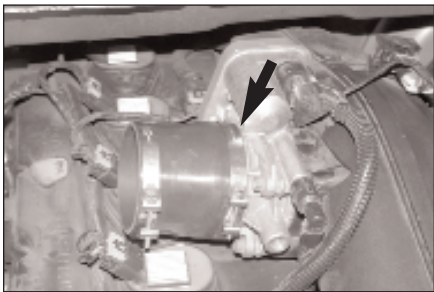
10. Install the trim seal onto the heat shield and trim to fit as shown.



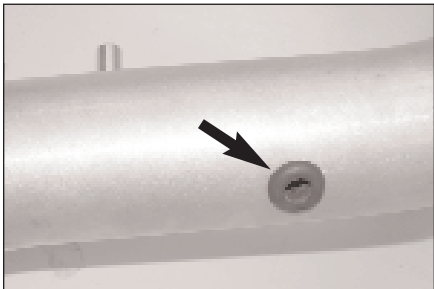
11. Install the provided bracket onto the heat shield using the provided hardware but do not tighten completely at this time.



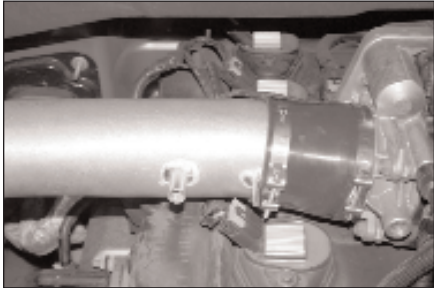
12. Install the heat shield onto the windshield washer reservoir and secure to the stock air cleaner cover mounting holes using the provided hardware but do not tighten completely at this time.



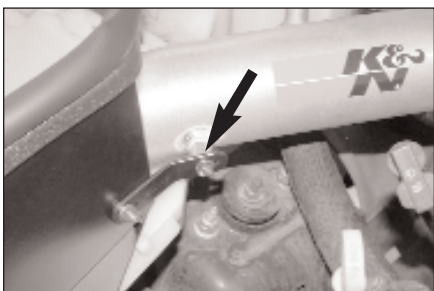
13. Install the silicone hose and hose clamps onto the throttle body as shown. The hose clamp on the throttle body may be tightened at this time.



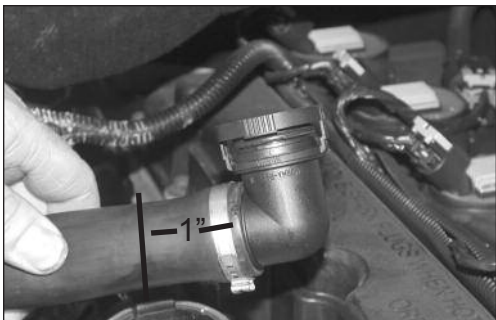
14. Install the provided grommet into the hole on the K&N® intake tube as shown.



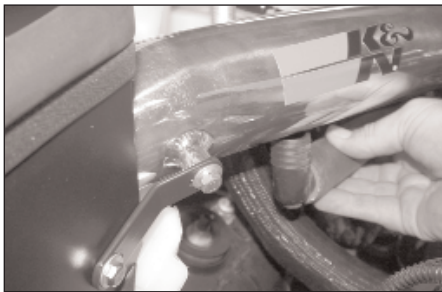
15. Slide the K&N® intake tube into the silicone hose at the throttle body as shown.



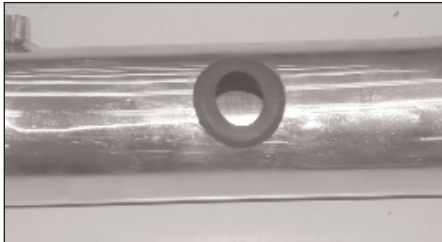
16. Secure the bracket on the heat shield to the threaded boss on the K&N® intake tube. Check everything for best fit and clearance then tighten all hose clamps and hardware.



16a. On vehicles with air injection cut the vent hose 1" from end of hose.



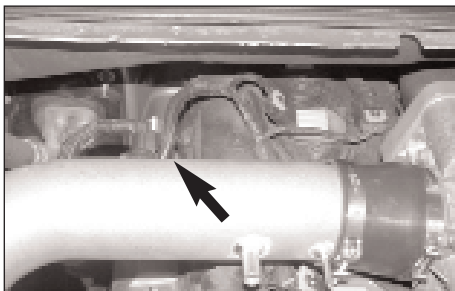
16b. On vehicles with air injection, install the 90 degree fitting into the vent line then mark the intake tube where the fitting lines up with tube, then remove intake tube from vehicle.



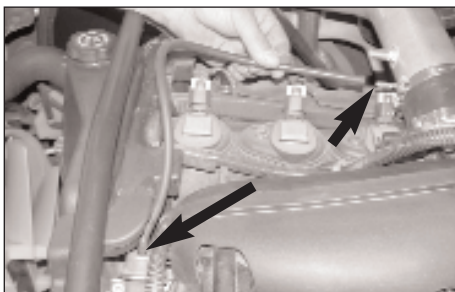
16c. Use a 1-1/4 hole saw to drill a hole where the intake tube was marked in the previous step. Then install the provided grommet as shown.



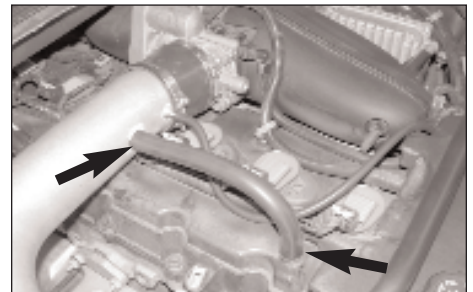
16d. Re-install the intake tube onto the vehicle, then install the 90 degree fitting into the grommet on the intake tube as shown.



17. Install the air temperature sensor into the grommet on the K&N® intake tube as shown.



18. Install the provide silicone hose onto the fuel pressure regulator, then, connect the other end to the vent on the K&N® intake tube as shown.  
**NOTE: On vehicles that did not come with fuel pressure regulator use supplied plug on tube vent.**



19. Install the provided silicone hose onto the vent on the K&N® intake tube and connect the other end to the crank case vent on the cam cover as shown.



20. Install the K&N® air filter onto the K&N® intake tube and secure using the provided hose clamp as shown.



21. Reconnect the negative battery cable and double check to make sure everything is tightened and properly positioned before starting the vehicle.

22. The C.A.R.B. exemption sticker, (attached), must be visible under the hood so that an emissions inspector can see it when the vehicle is required to be tested for emissions. California requires testing every two years, other states may vary.

23. It will be necessary for all 77 series to be checked periodically for realignment, clearance and tightening of all connections. Failure to follow the above instructions or proper maintenance may void warranty.

#### ROAD TESTING:

1. Start the engine with the transmission in neutral or park, and the parking brake engaged. Listen for air leaks or odd noises. For air leaks secure hoses and connections. For odd noises, find cause and repair before proceeding. This kit will function identically to the factory system except for being louder and much more responsive.

2. Test drive the vehicle. Listen for odd noises or rattles and fix as necessary.

3. If road test is fine, you can now enjoy the added power and performance from your kit.

4. K&N suggests checking the air filter element periodically for excessive dirt build-up. When the element becomes covered in dirt (or once a year), service it according to the instructions on the Recharger service kit, part number 99-5050 or 99-5000.

**INTAKE SYSTEMS FOR VEHICLES LISTED ARE 50 STATE LEGAL. SEE KNFILTERS.COM FOR CARB STATUS ON EACH PART FOR A SPECIFIC VEHICLE.**